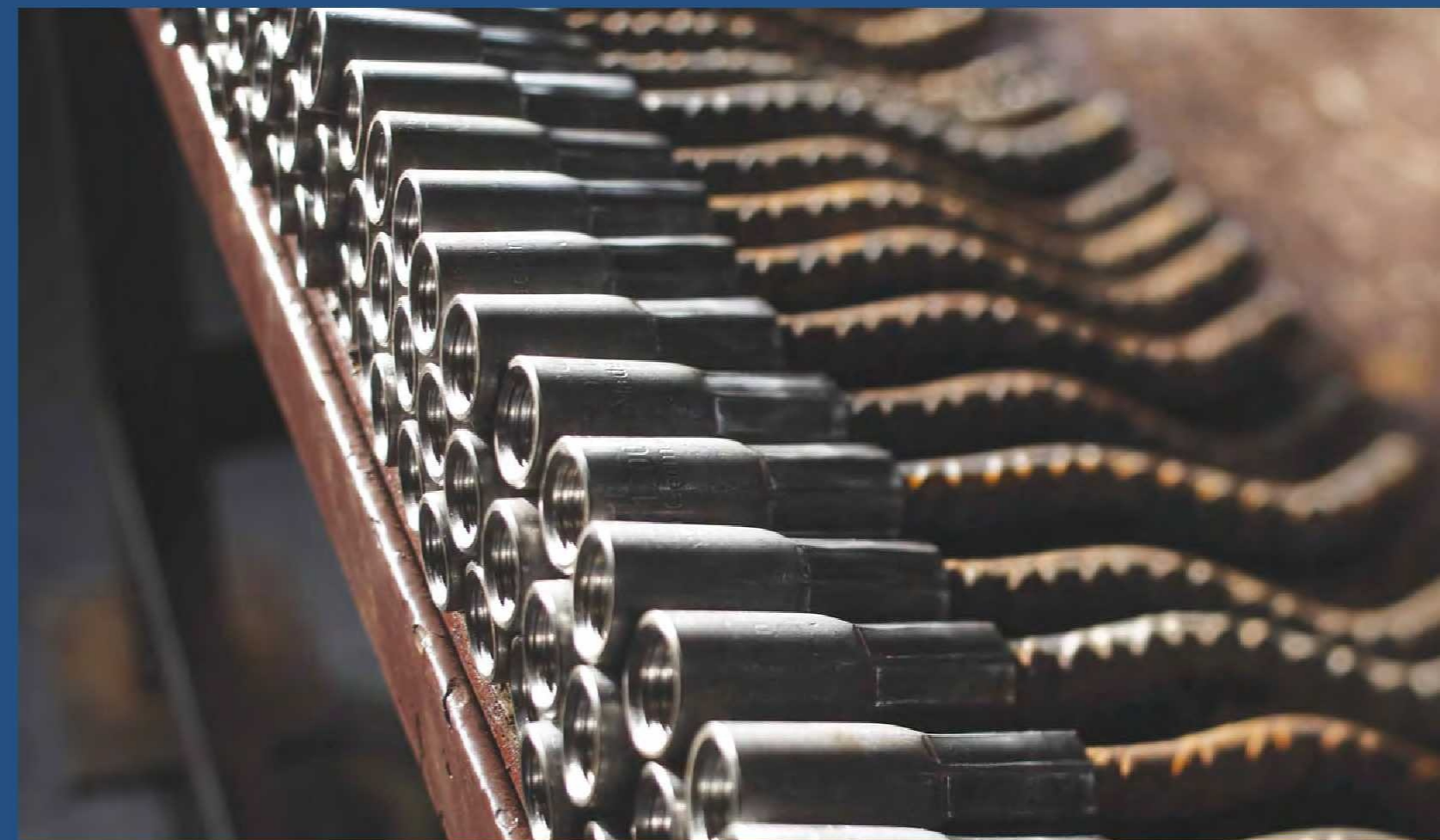




Transport and mounting systems for prefabricated units





Welcome

Dear business partner,

The PHILIPP Group with its headquarter in Aschaffenburg is one of the largest medium sized family owned businesses in the region Lower Franconia and is active as important production and trading company world wide. With 200 employees and cooperation partners abroad we are one of the leading supplier of transport and mounting systems for prefabricated units, hydraulics, pneumatics and conveyor equipment, as well as load attachment, lifting and lashing technology and rope technology. Numerous patents and industrial property rights stand for innovation and technical know-how.

Our aims – challenging, customer oriented and feasible!

Our topmost aim is a high customer satisfaction by ideal service and sophisticated, practical products. We meet individual challenges with customized solutions.

Benefit from our expertise and experience!

Being dedicated to progress we set value on keeping well proven solutions and integrating effective grown structures in innovations. Being successful we present a company which has shown stability in performance, customer services, quality standard and personal dedication. This is also shown in the TÜV certification according to DIN EN ISO 9001:2008.

We thank you for your interest and trust.


Martin Philipp


Thorsten Philipp



Transport and mounting systems for prefabricated units



Professional Solutions for Heavy Tasks

Our specialists are concerned with the development of individual transport and mounting systems for prefabricated units. This is where, based on latest technology, our experts are working out customized system solutions for the securing and assembly of heavy construction components. Practical on-site tests ensure that our concepts are precisely tailored to your requirements. We can then realise these concepts in our own facilities.

A considerable proportion of our services is provided on-site. Our engineers will gladly visit your precast-unit factory to train your technicians and production staff, to consult on the assembly of prefabricated parts and, last but not least, to help optimize your manufacturing processes.



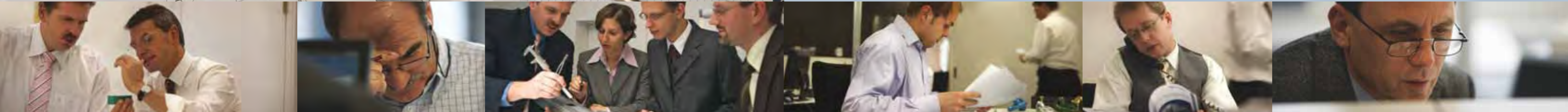
Additional technical innovations by PHILIPP

- We have developed a software solution that will carry out the sizing of PHILIPP sandwich anchor systems for you. One more laborious task we can help you solve simply and individually.
- The PHILIPP animated films are the graphical illustration of the technical documentation about transport and mounting systems. They explain the installation and application as well as the advantages comprehensibly and precisely. Furthermore the visual illustration simplifies also the training of new employees
- On our homepage www.philipp-gruppe.de you find a calculation program as support for the products from our connecting technique.
- To consider our products in the design process drawings are available as dxf-files for engineers and architects.





Technology

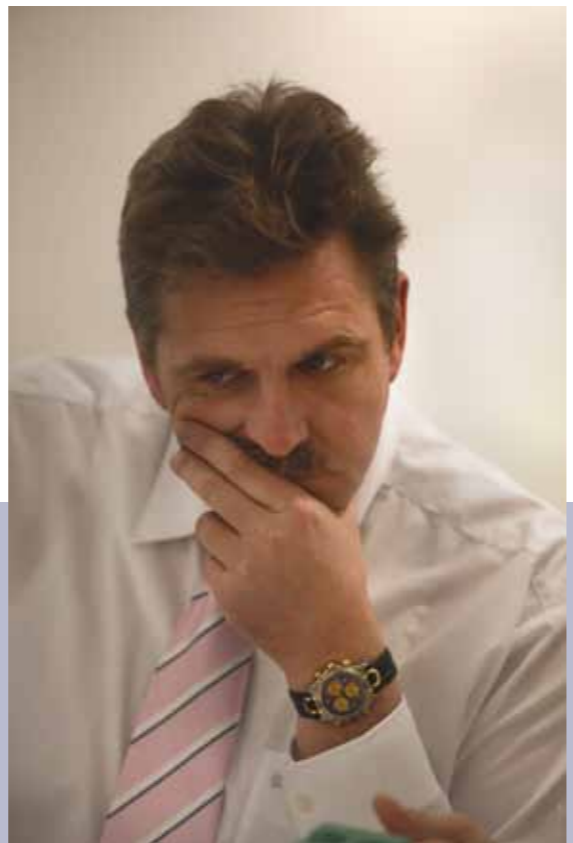


Development and Innovation

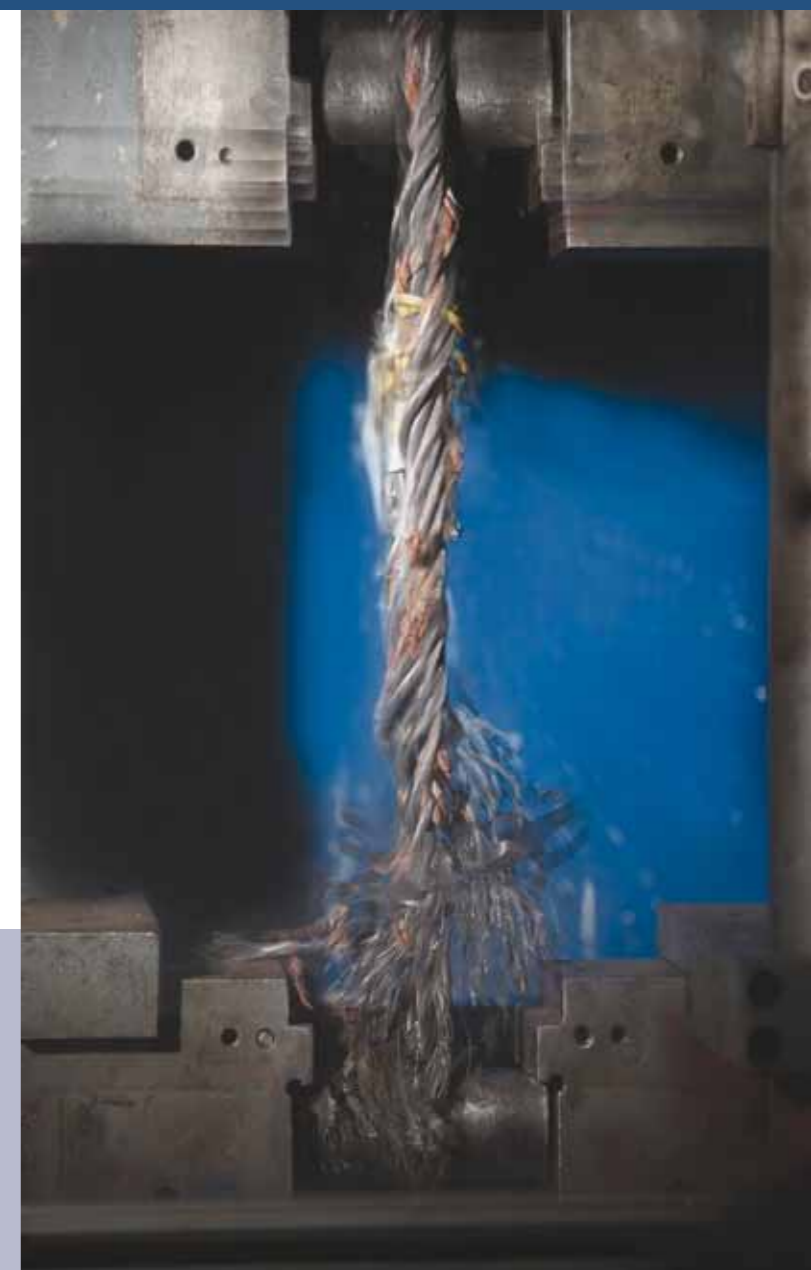
Our technical department is responsible for the development of new and existing products. National and foreign patents give testimony of the innovative power of the PHILIPP Group.

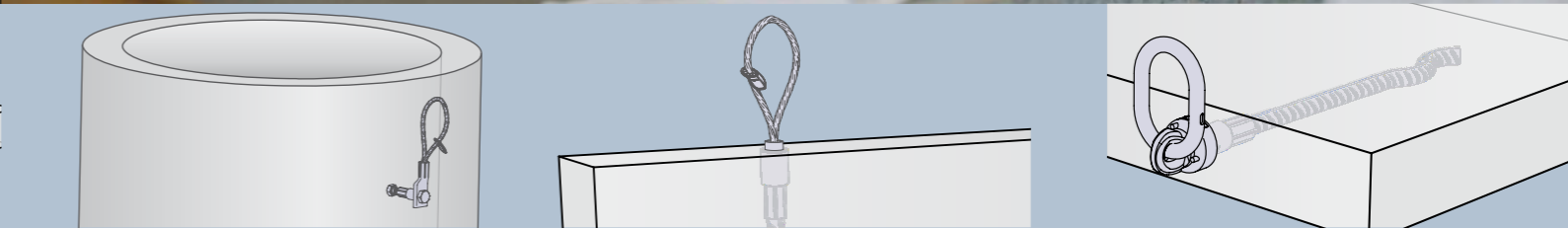
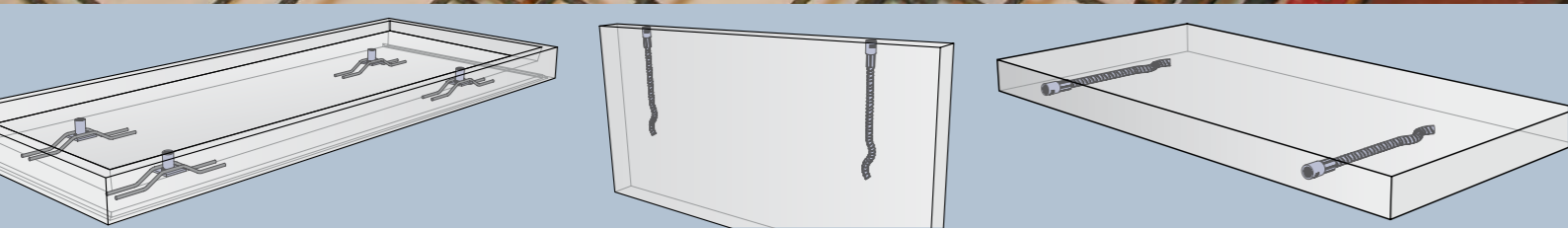
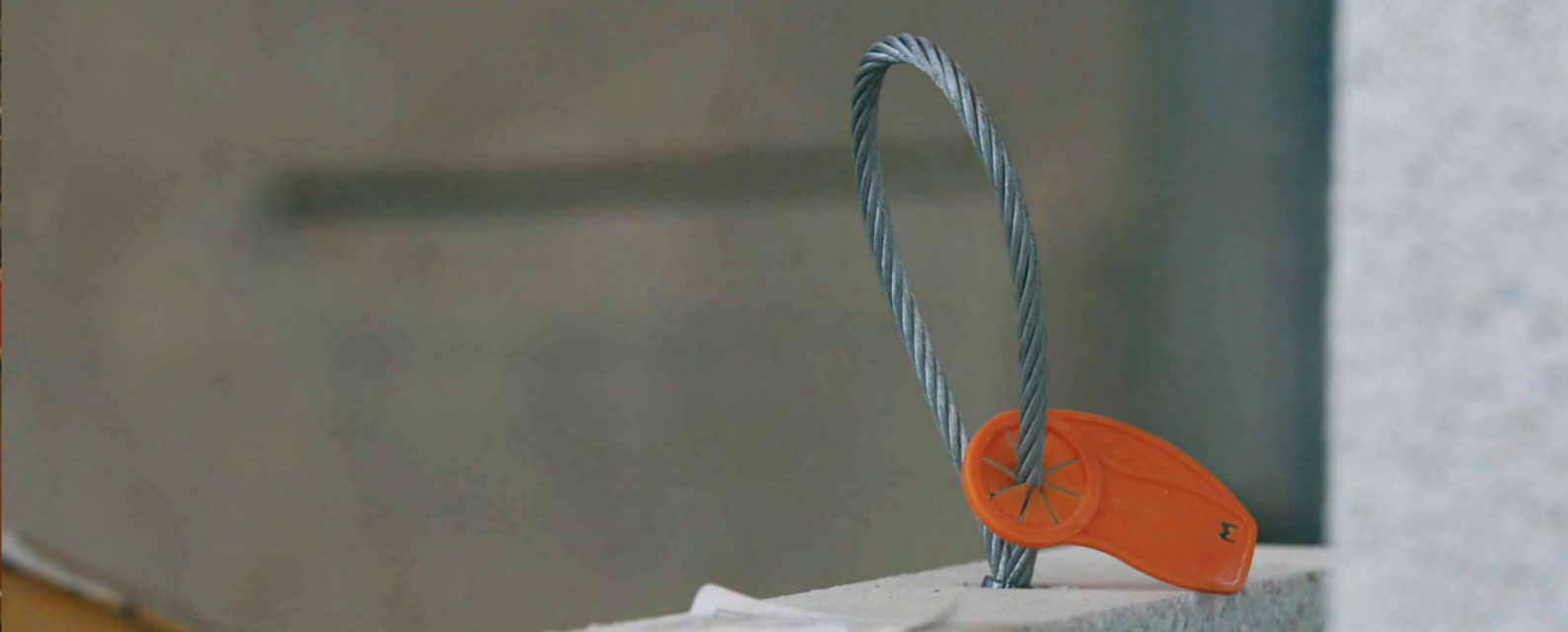
One of our distinctive strengths, and much appreciated by our customers, is our ongoing capability to meet individual challenges with custom solutions. These include, in addition to fitting and application guidelines, our animation films, customer-specific assembly proposals and on-site training – wherever our solutions are deployed.

To ensure a high safety of our system components we are in cooperation with federal institutes for material testing. It goes without saying that we also have – where required – German Approvals from DIBt.



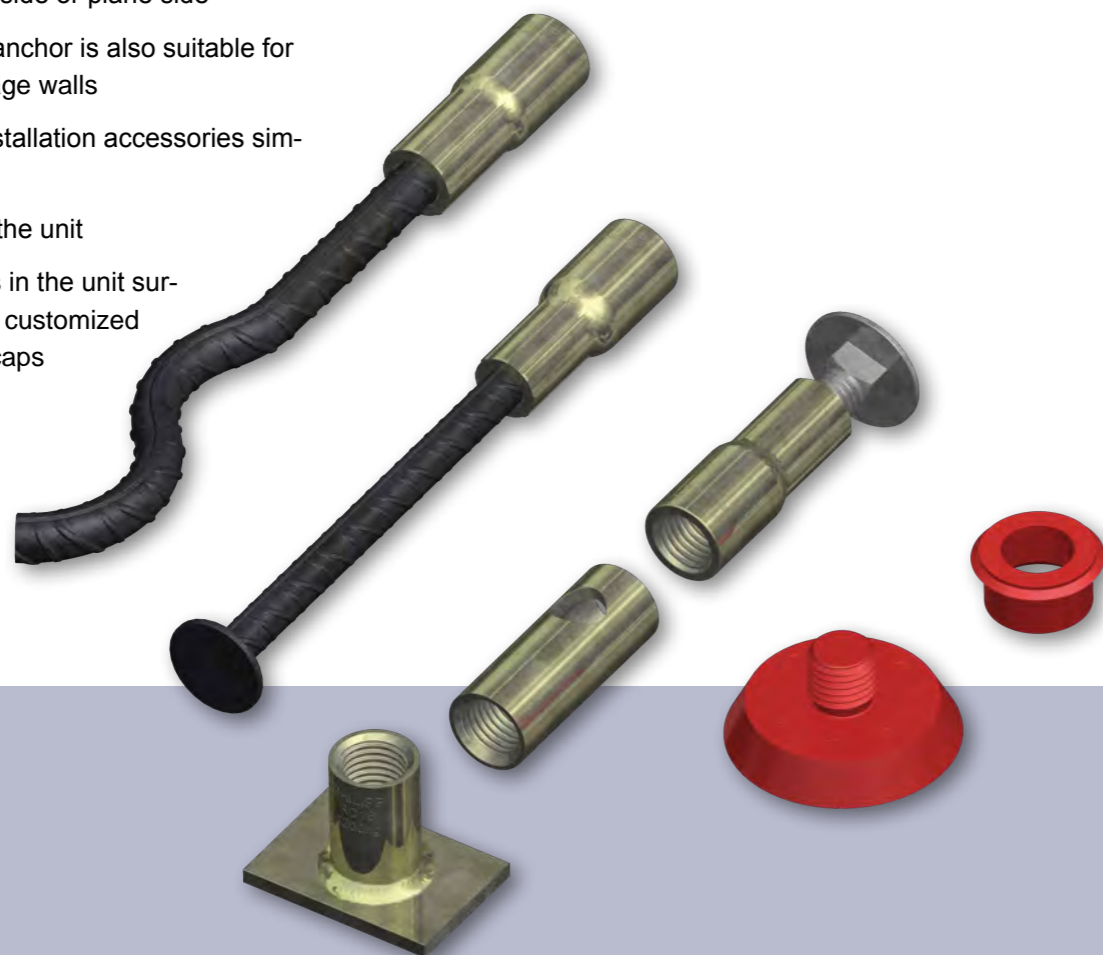
Wherever possible, we take part in initiatives for mutual exchange. Our company is a member of the German Fachverband Seile und Anschlagmittel (FSA) e.V. (Trade Association for Ropes and Load Attachment Rigging). We are also an active member of the Bundesverband Bausysteme e.V. (German Association of Construction), in which we significantly contribute to the working group “Anchoring in Concrete” – an area in which the PHILIPP Group has acquired considerable expertise. After all, we feel that our know-how does not belong to us alone.





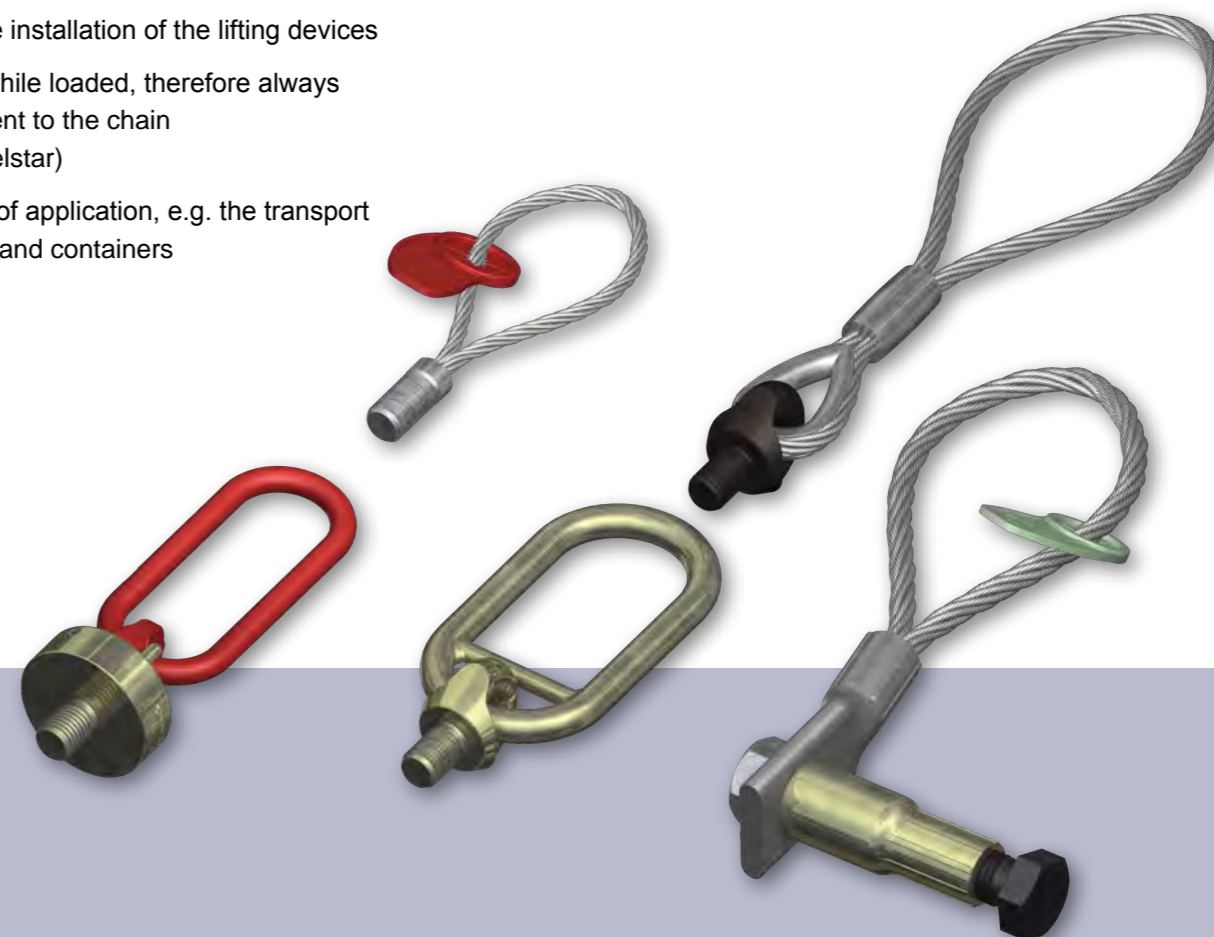
Threaded Anchors

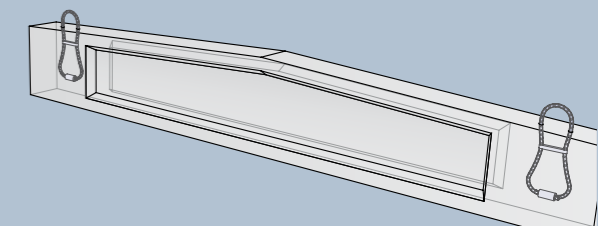
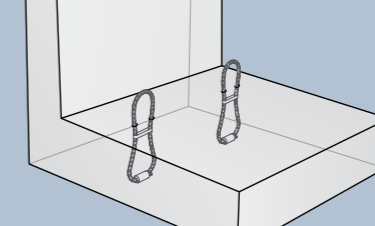
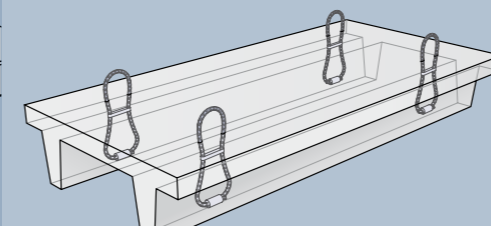
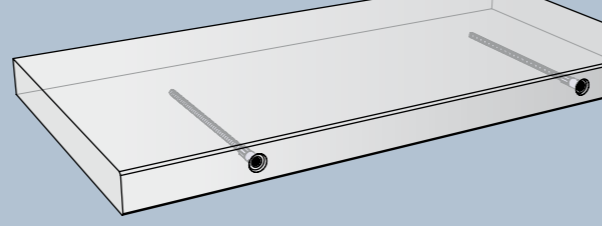
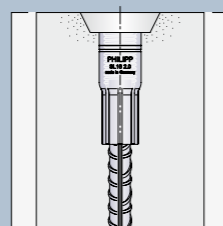
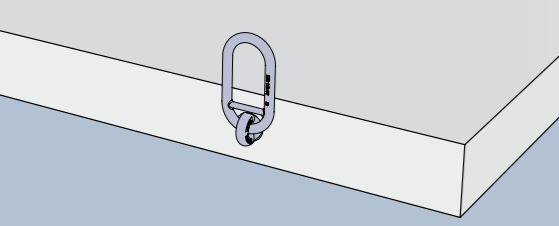
- suitable for any application because the anchors are subdivided into 12 load levels
- maximum load bearing capacity: 20 tons
- can be installed in face side or plane side
- due to its slim size the anchor is also suitable for very thin walls e.g. garage walls
- optimally assembled installation accessories simplify the mounting
- no parts sticking out of the unit
- the very small openings in the unit surface can be covered by customized stainless steel sealing caps



Lifting Devices for Threaded Anchors

- assembled lifting devices for your requirements
- suitable for different areas of application (e.g. axial, diagonal or lateral loading)
- maximum load bearing capacity: 20 tons
- simple and safe installation of the lifting devices
- free rotatable while loaded, therefore always optimal alignment to the chain (PHILIPP Wirbelstar)
- Versatile fields of application, e.g. the transport of walls, plates and containers





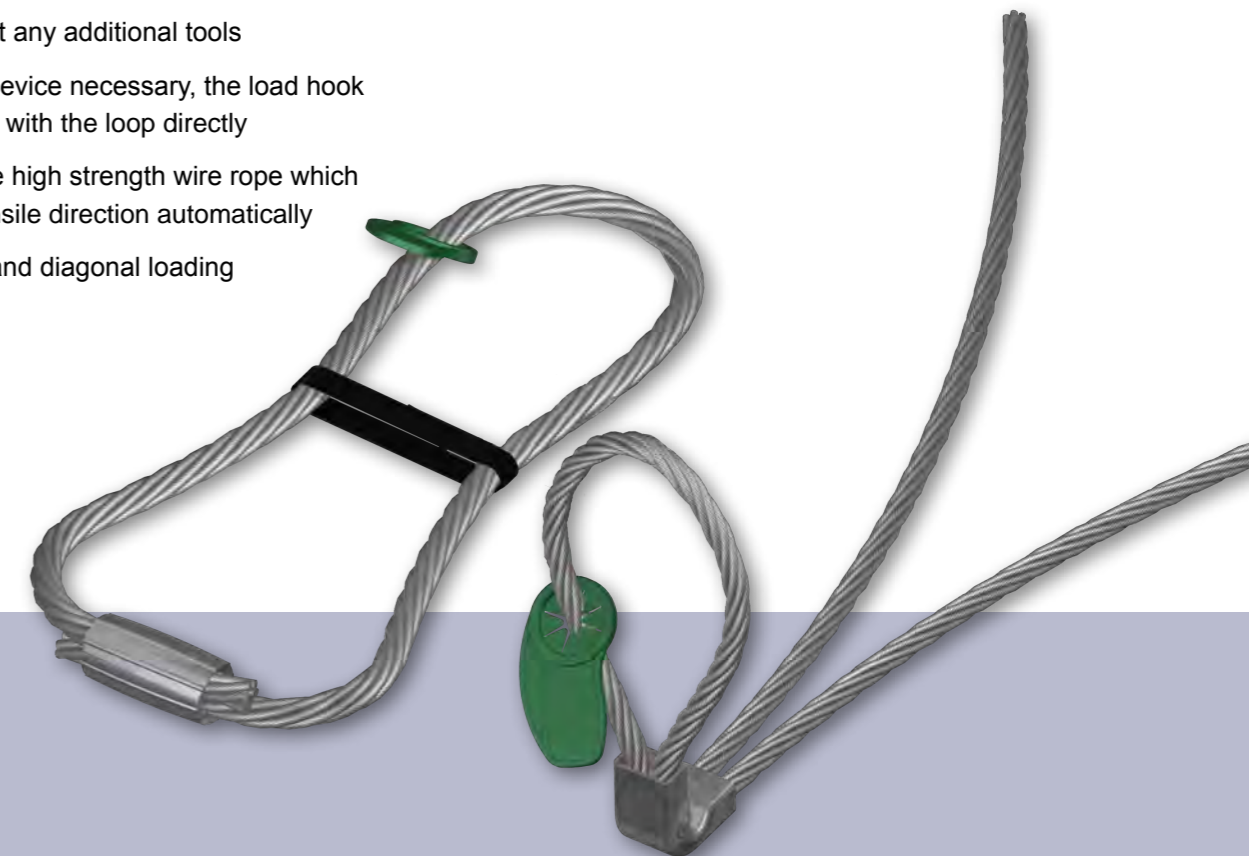
Power System SL

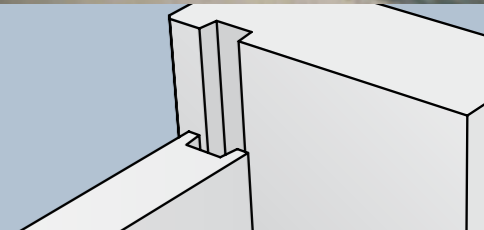
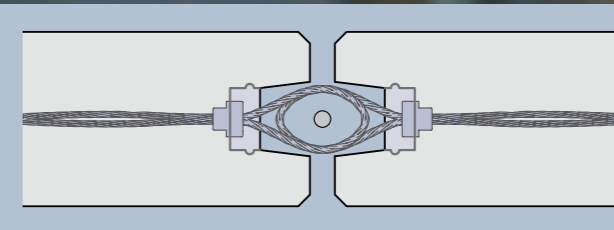
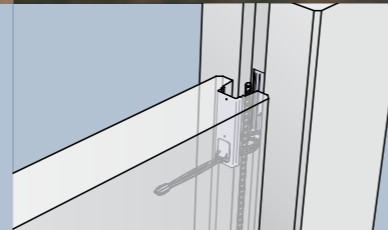
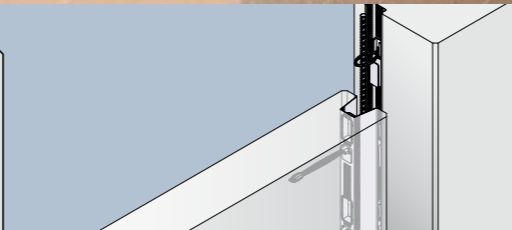
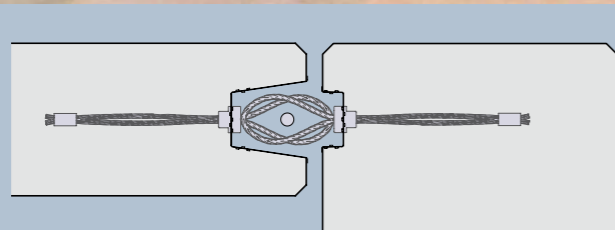
- higher load bearing capacity up to 14,5 tons at comparable anchor dimensions
- higher safety due to left hand thread (no combination with standard system possible)
- simplified design
- smaller unit dimensions
- one lifting device for all load directions
- due to 4 load levels optimized storage
- simple optical determination due to black socket
- bearing capacity values for different wall thicknesses per anchor size



Cast-in Lifting Hoops

- perfect solution for extreme heavy and massive units (e.g. columns, frames, bridge beams, double T-slabs)
- 14 load levels with a maximum load bearing capacity of 25 tons are standard, special solutions up to 99 tons available on request
- installation without any additional tools
- no special lifting device necessary, the load hook can be connected with the loop directly
- consists of flexible high strength wire rope which aligns with the tensile direction automatically
- suitable for axial and diagonal loading

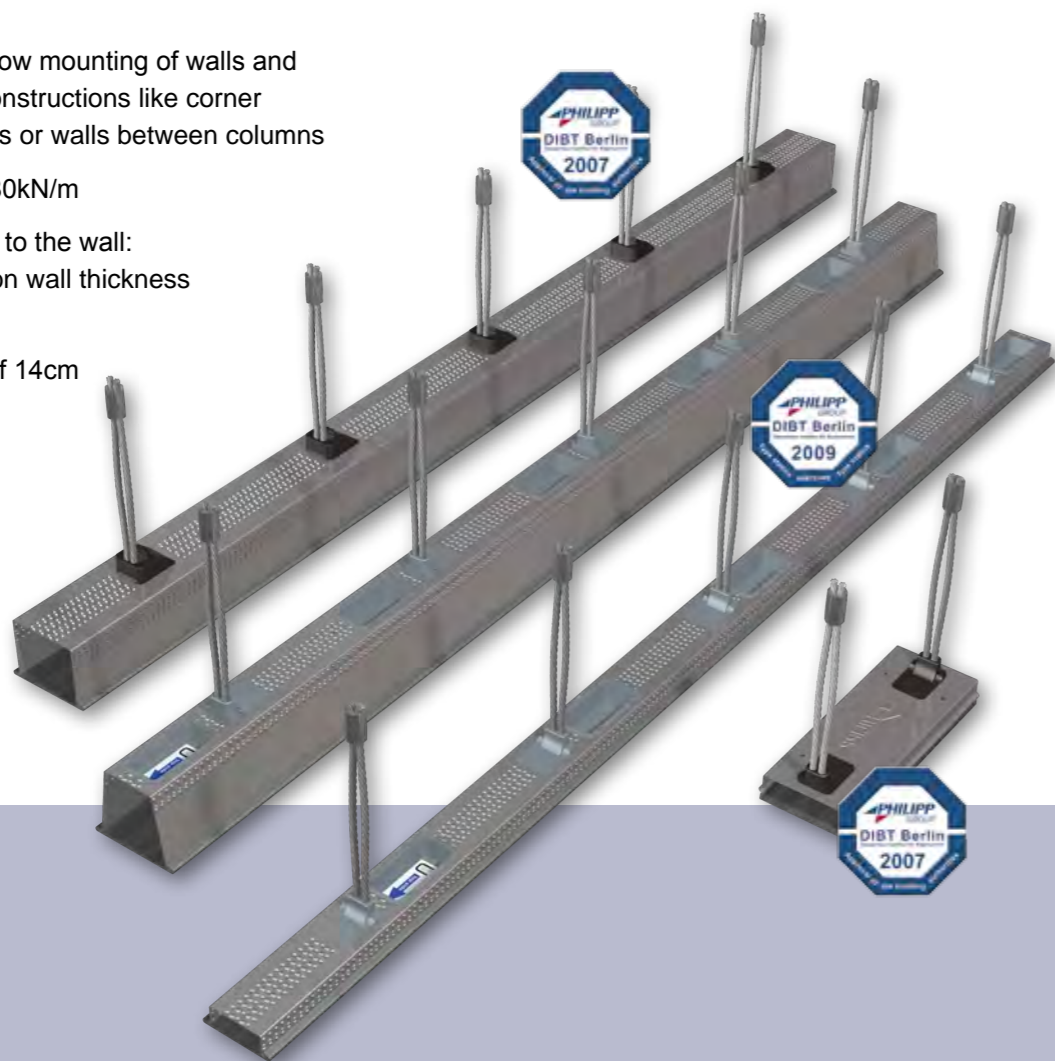




Connecting technique

for approved connections

- PHILIPP Power Rail, Power Box and Power Duo with German approval
- flexible steel wire loops allow mounting of walls and columns in complicated constructions like corner connections, T-connections or walls between columns
- shear force parallel: until 80kN/m
- shear force at right angles to the wall: 9,7-37,5kN/m depending on wall thickness and concrete class
- valid from wall thickness of 14cm
- values for bearing capacity until a wall thickness of 30cm
- German fire resistance class F90, F120, F180 (outside approval)



Connecting technique

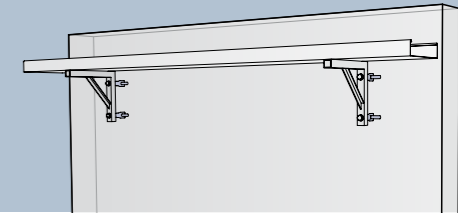
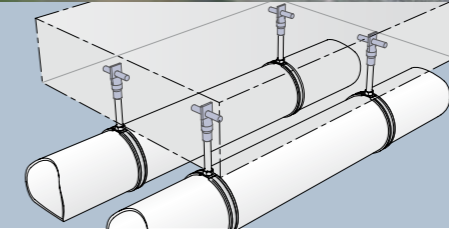
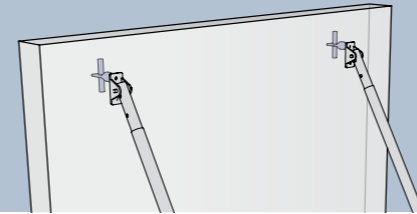
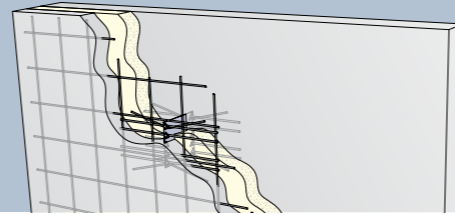
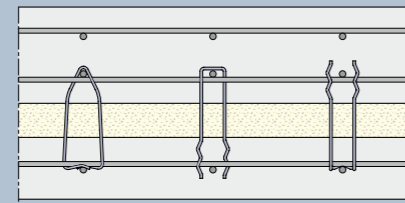
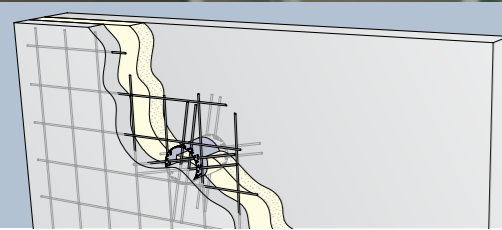
for structural connections

- perfectly suitable for the connection of precast units
- wall/ column and T-connection: combination of a 70mm high rail and a 20mm high rail including a loop with 100mm length
- wall/wall connection: combination of two 40mm high rail including a loop with 100mm length
- simple and safe mounting with timber board or existing joint geometry of the recess former
- special width of recess former: 60mm and 85mm
- 4 different loop lengths
- number of possible loops: 2, 3 and 5
- German fire resistance class F90, F120, F180



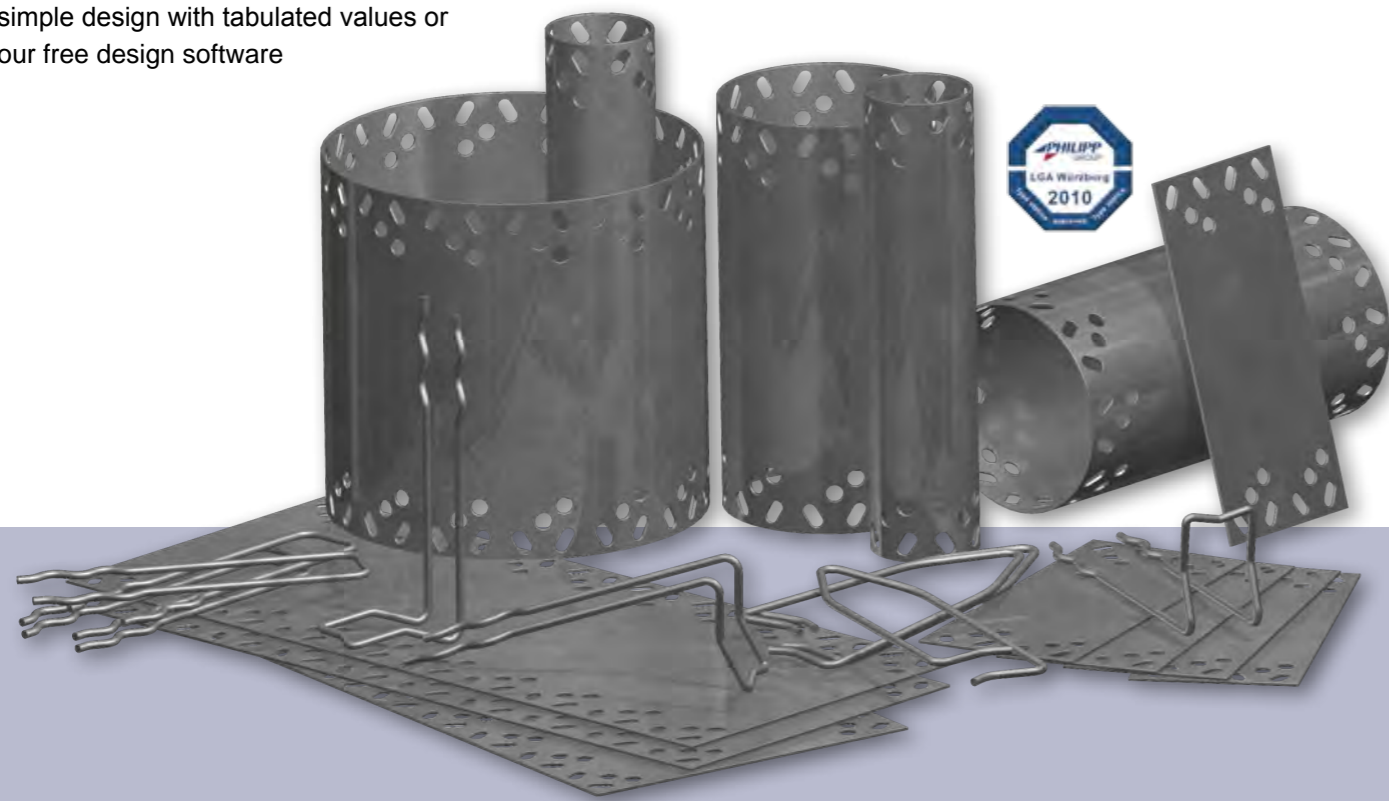
Simple online calculation
at www.philipp-group.de





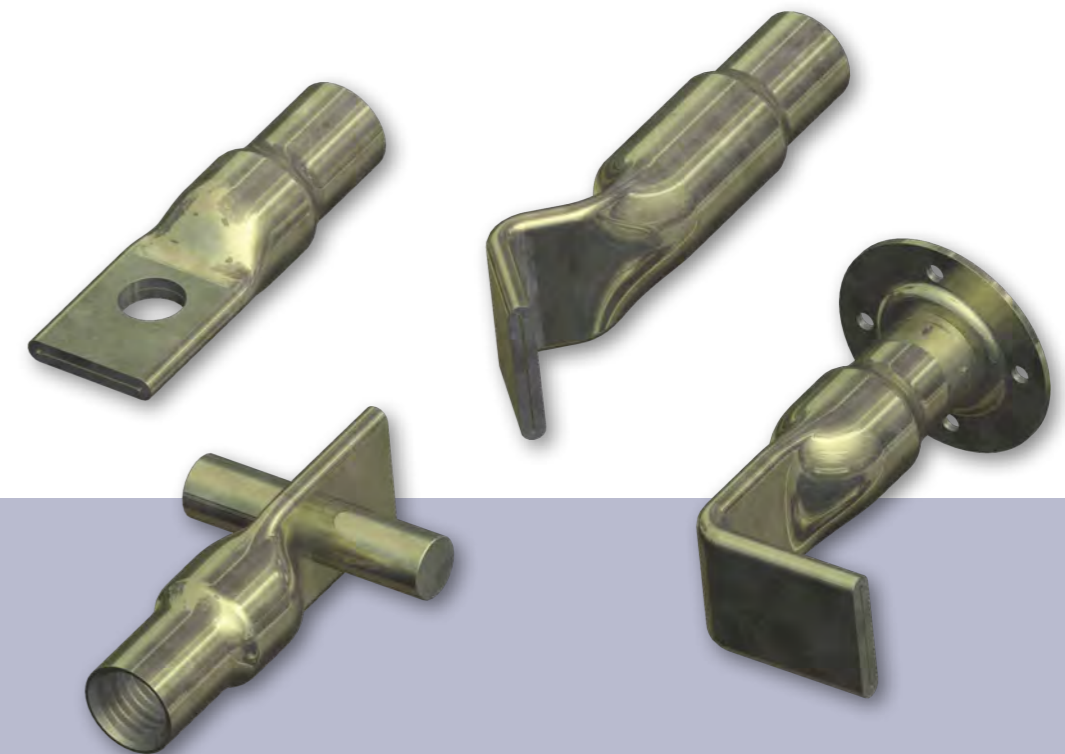
Sandwich Anchor System

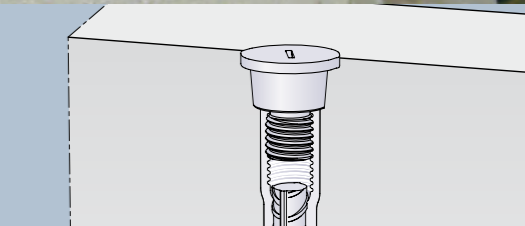
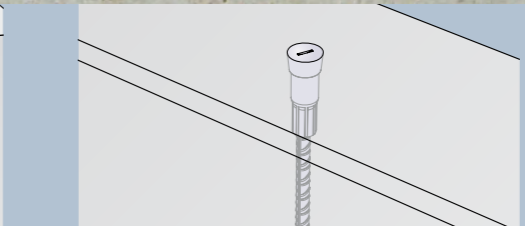
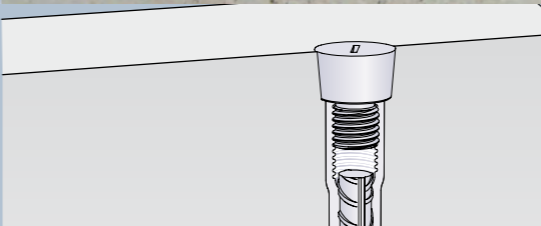
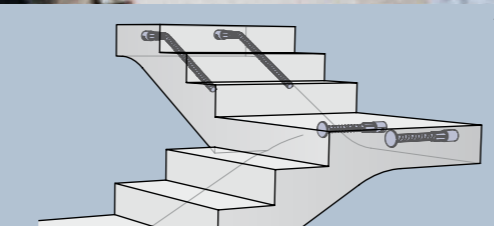
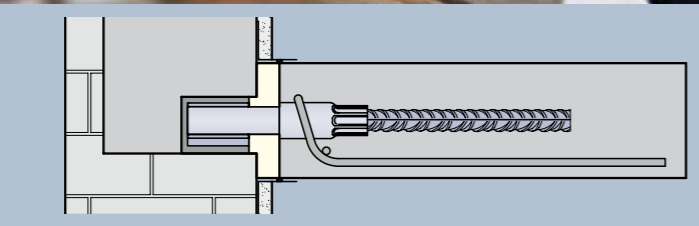
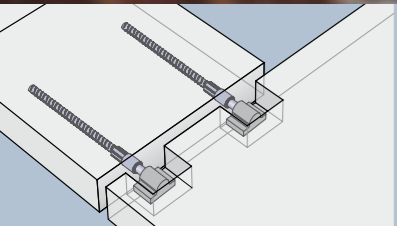
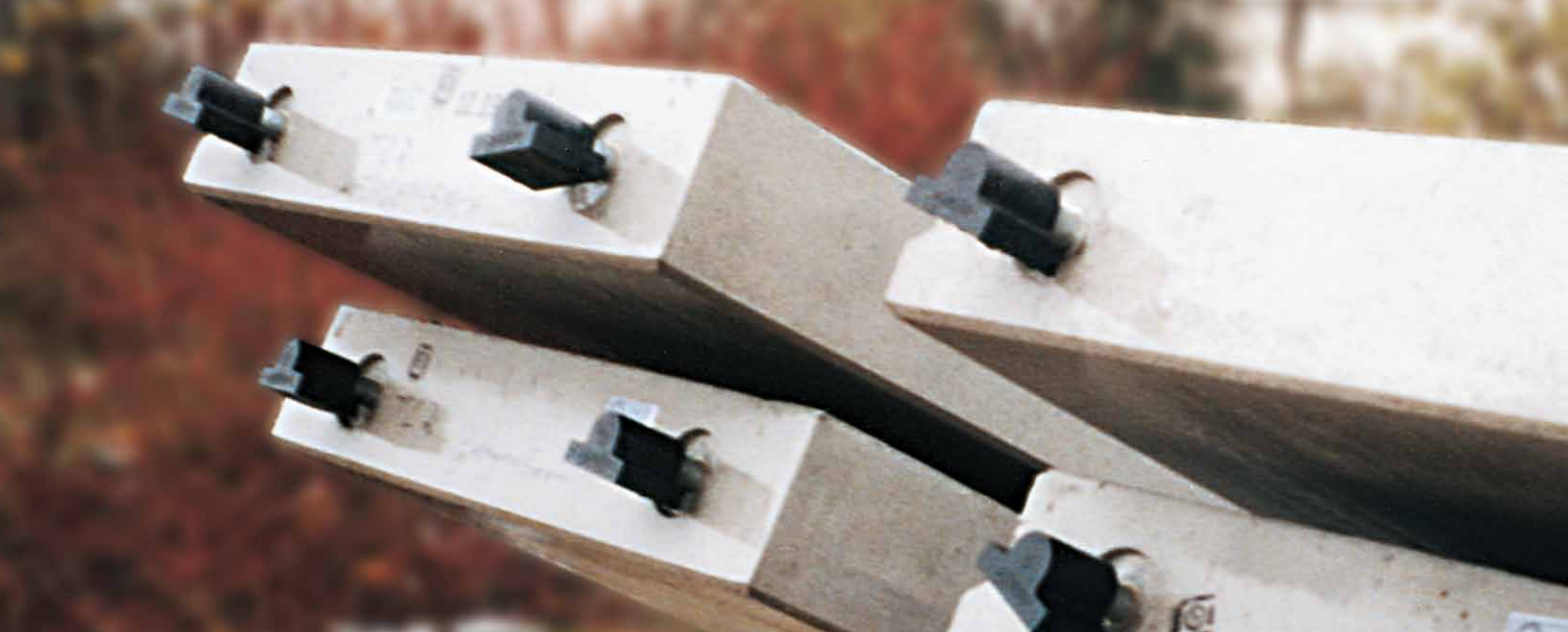
- system with structural standard approved by LGA Würzburg
- approved system to connect facing layer and load bearing layer of sandwich walls
- all system parts are made of stainless steel
- fast and simple installation, because no complicate cutting of the insulation layer is required
- simple design with tabulated values or our free design software



Fixing System

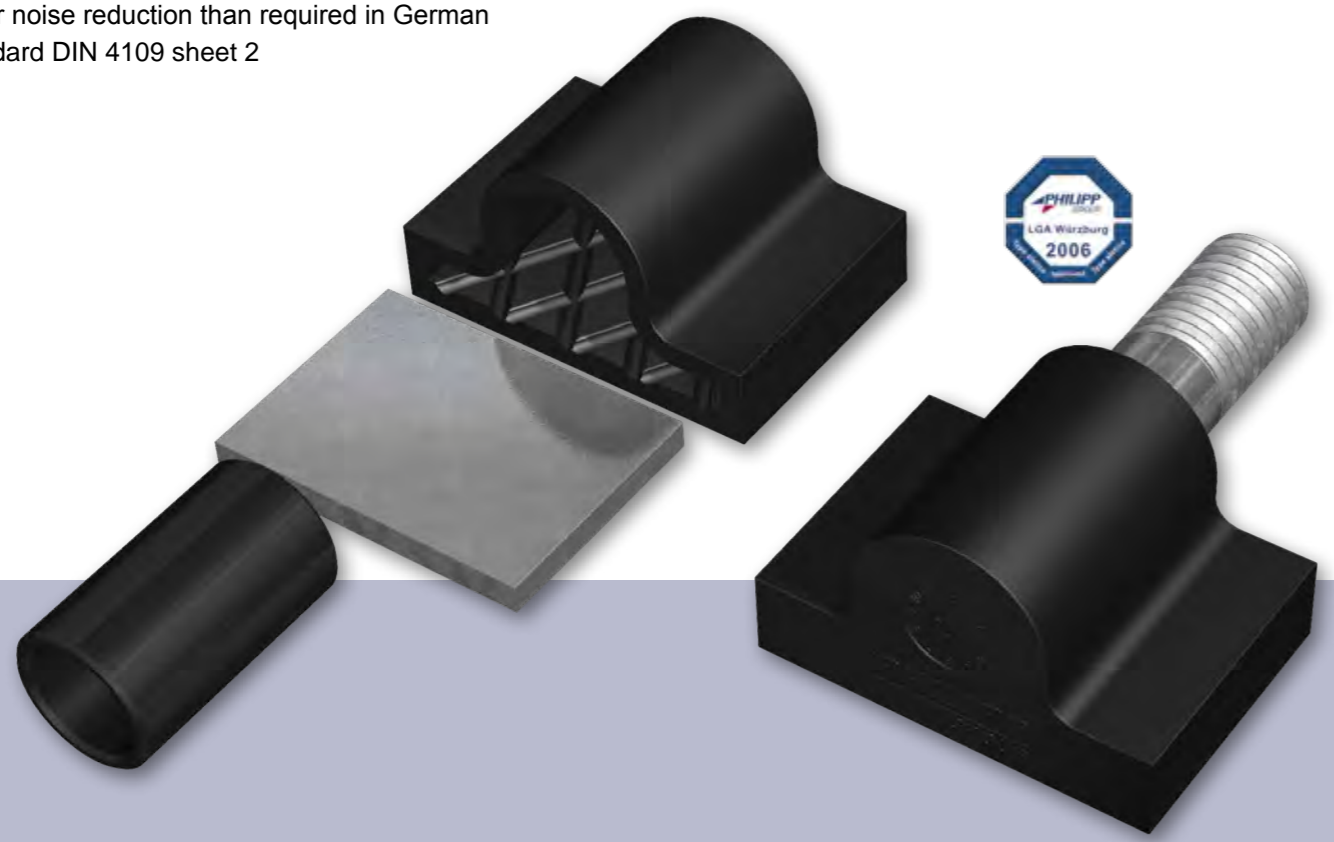
- suitable for all fixations, if no approval is required
- maximum load bearing capacity: 2.75 tons
- time-saving on construction site due to planned fixation points
- numerous installation situations realizable due to 4 different insert types
- also available in stainless steel





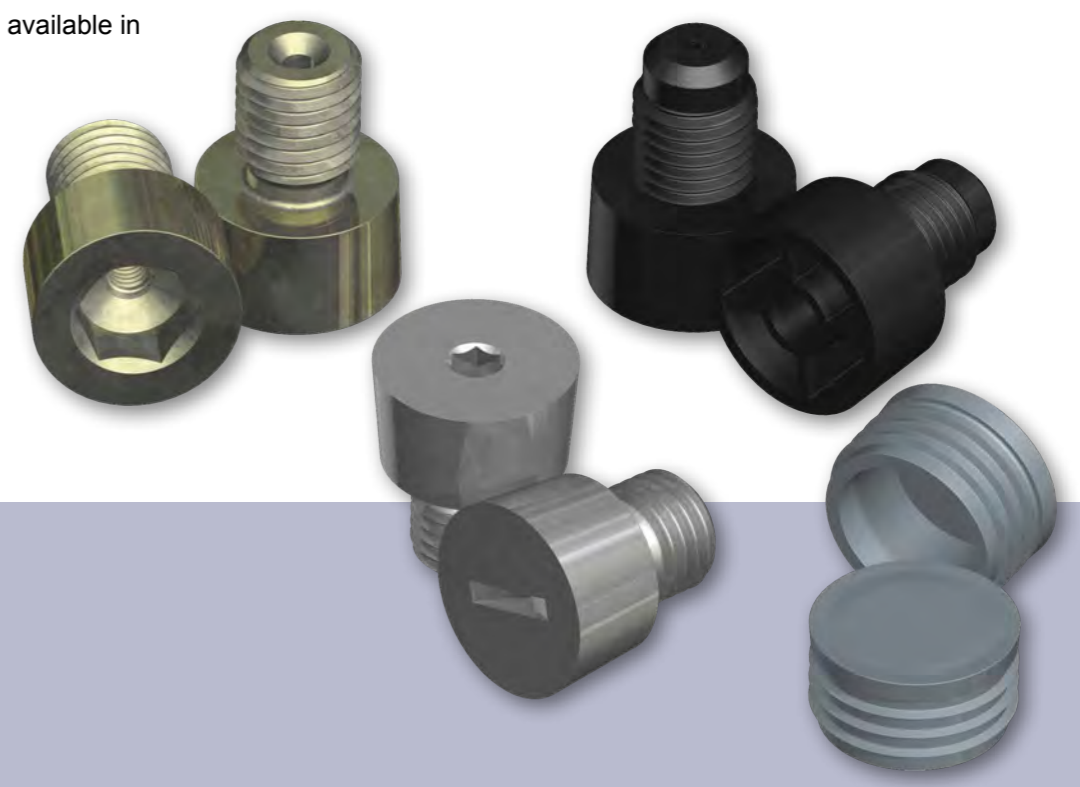
Noise Reduction System

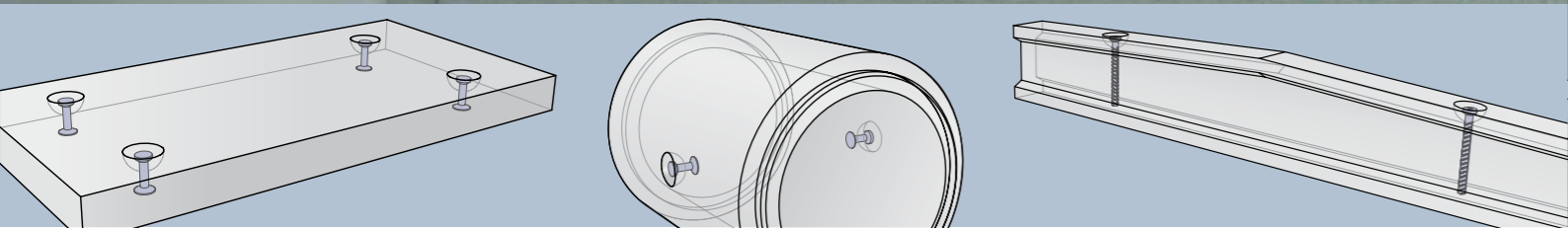
- noise reduction system with structural standard approved by LGA Würzburg
- varying stair types possible because of different threaded anchors were already covered by the approved structural standard
- proofed mounting distances up to 80mm
- better noise reduction than required in German Standard DIN 4109 sheet 2



KH System

- fixing device suitable for thread sizes of M/RD12-24 create openings with diameter Ø27mm
- fixing device suitable for thread sizes of M/RD30-42 create openings with diameter Ø48mm
- optimal adjusted sealing caps available in plastic and stainless steel
- stainless steel sealing caps can be chosen between slot and allen screw
- plastic sealing caps are also available in coloured version





Spherical Head System

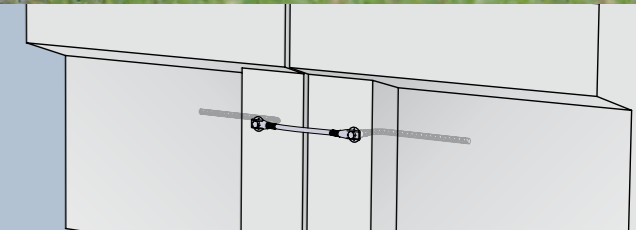
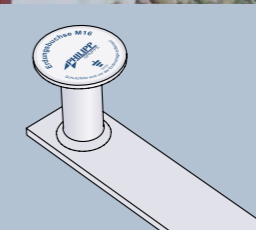
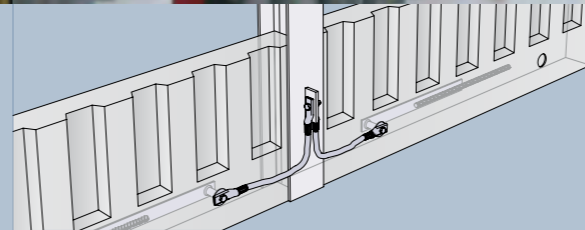
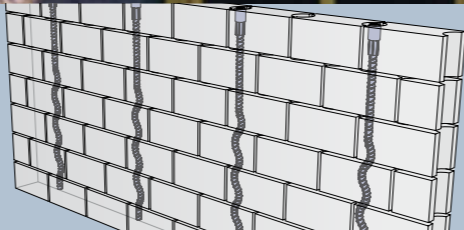
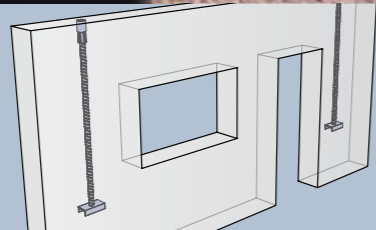
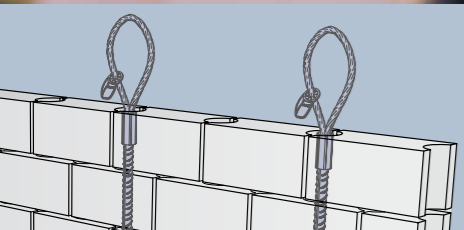
- the anchors are subdivided into 10 load levels
- maximum load bearing capacity: 32 tons
- variable applications (e.g. walls, slabs and pipes)
- can be used for axial, diagonal or lateral lifting
- simple and safe coupling of anchor and lifting device
- no parts sticking out of the unit
- simple installation because anchor is rotation symmetrically constructed
- long-lasting lifting device



Hole Anchor System

- subdivided into 5 load levels
- maximum load bearing capacity: 22 tons
- numerous different anchor types available, hence in many different application fields usable
- fast, simple and safe slinging with ring clutch
- long-lasting lifting device with exchangeable safety lock





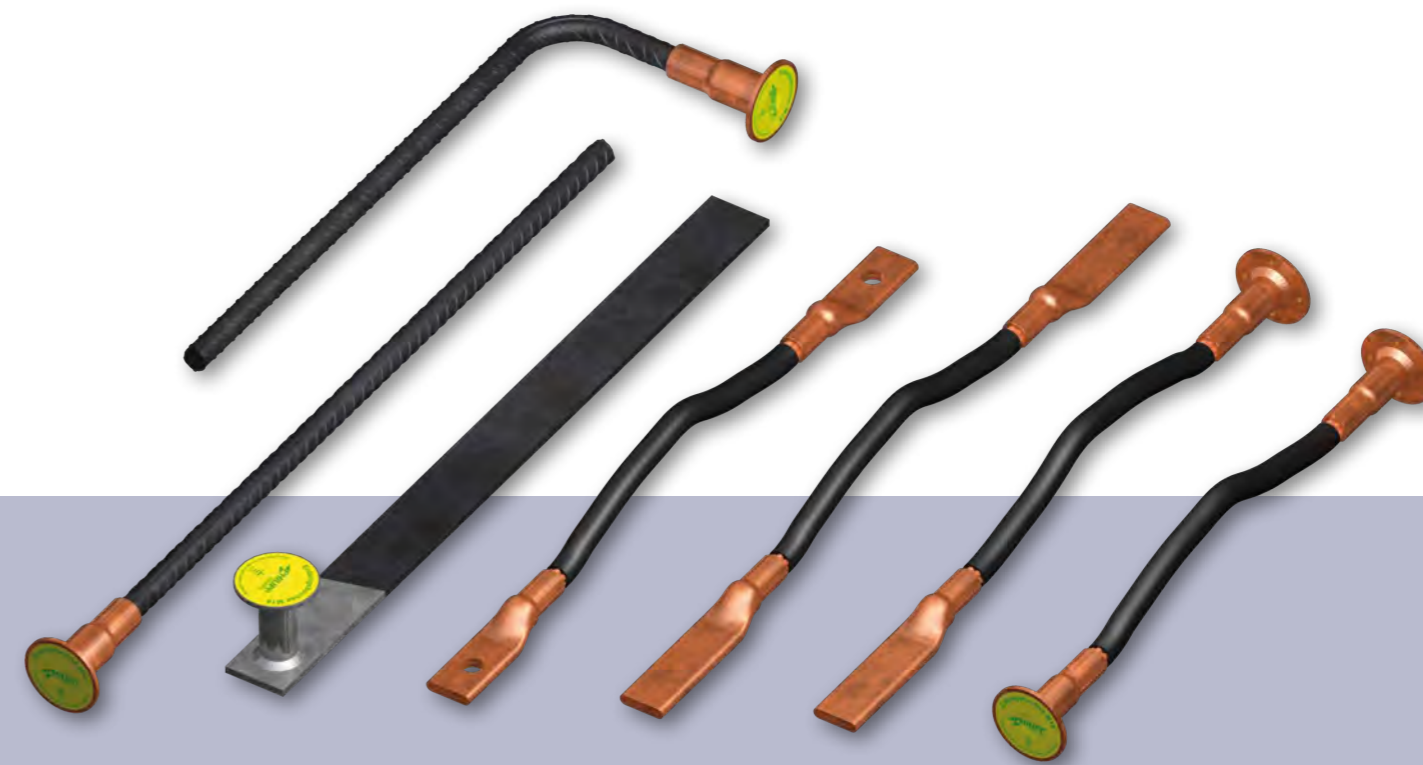
Light Weight Concrete and Masonry Anchors

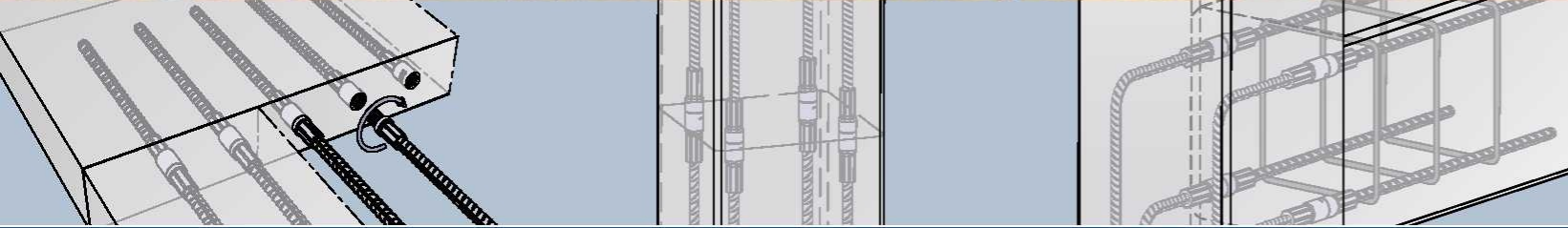
- maximum load bearing capacity: 4 tons
- u-shaped steel profile ensures safe load transfer from the anchor into the light weight concrete
- available with crimped loop, threaded insert or spherical head anchor
- optimally harmonised installation tools simplify the mounting
- due to its slim size suitable for small grouting channels in masonry walls



Earthing Technique

- earthing of units close to high-voltage lines
- no danger of mix-up, since one thread size fulfils all requirements
- fast and precise mounting of the earthing cable through ready-made systems
- Earthing sleeve approved by the „österreichischen Bundesbahn (ÖBB)“ and „deutschen Bundesbahn (DB)“





Splicing Systems

- fast and safe connection of continuative reinforcement
- suitable for your requirements due to 7 different thread sizes from M16 - M42
- no time consuming reverse bending necessary
- the unit to be connected can vary in geometry because rebar can be bent
- no reinforcement sticking out of the unit
- due to nailing plate less installation time
- no welding of overlap connection necessary

